

Electrical Wiring Device & Accessories



Leading the Market in Quality, Reliability, Safety and Responsibility

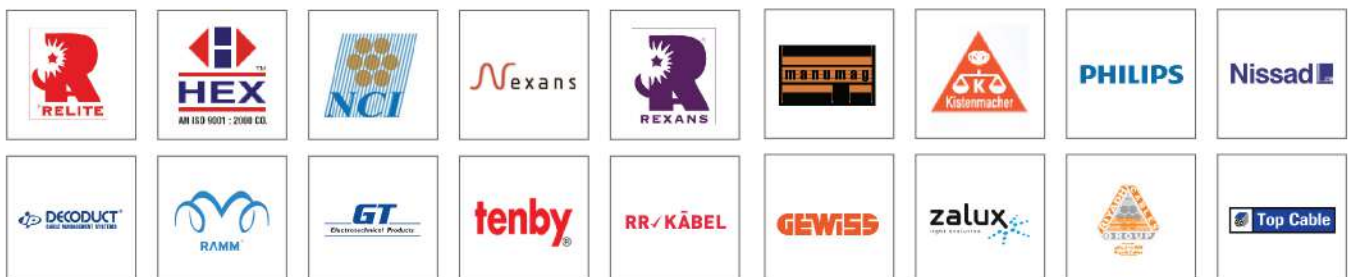
COMPANY PROFILE

Alfa Electric is pleased to introduce as one of the largest and most diversified Electrical Importers, Suppliers and Traders in the U.A.E. The Business of this Firm is trading with all kind of Electrical Accessories, Light Fittings, Cables, Wires, Pumps, Marine Products Etc. We also specialize in Switchgear Components and Pannel Boards (Both Supplies as well as Distribution Board Manufacturers).

We have established a very good and mutual business relations with our customers all over the U.A.E & International market.



OUR BRANDS



OUR VISION

To be an enterprising and creative organization, by restoring our creation offices as indicated by the freshest mechanical turns of events, to adjust to the changing patterns of the area, to fulfill the client needs with our different particular and alluring plans, to expand the consumer loyalty level by thinking about the social and moral qualities.

OUR MISSION

ALFA ELECTRIC retains the power to hold the Electrical Market with the best prices and services provided. Our research for new products and development for better quality is a non-stop program to satisfy our customer needs.

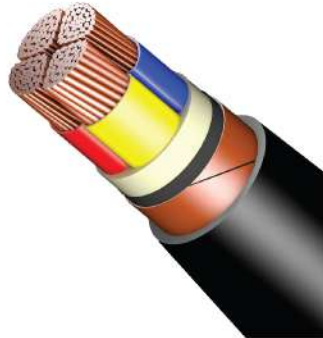
The product range is the widest from Specialized to General Items. We will be please to await your inquiries. We hope to have a good business relation in early future with you.





URANUS
FIREFLEX

- Low Voltage Cable
- Medium Voltage Cable
- PVC Wires
- LSZH Cable
- Single Core LSZH Wire
- FP-400/ MICA Cables
- PVC Flex / 105°



- Fire Performance Cables
- MV/HV Cables upto 36kV
- VFD Cables
 - BS 6387:2010 (Category CWZ)
 - IEC 60331-21:1999
 - EN 50200:2015 (Class PH30)
 - EN 60754-1:2014
 - EN 60754-2:2014
 - EN 61034-2:2005+A1:2013



RR KĀBAL

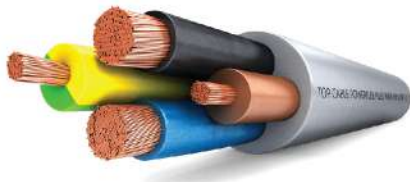
GEWISS

- Panel Wires 105°
- Panel Wires LSZH
- Control Cables
- LIYC Screened Cables



- PVC & Metal Weatherproof Junction Boxes
- PG & Metric Glands
- PVC & Metal Weather Proof Isolators
- Weather Proof Switches
- Industrial Plugs, Sockets & Interlocking S/Sockets

- Rubber Flexible - HO7RNF
- Welding Cables



PHILIPS 



- LED Lamps & Luminaires
- Conventional Lighting
- Magnetic & Electronic Controls
- HID Lamps and Luminaries

- PVC Strip Connectors
- Crimping Tool
- Hydraulic Crimping Tool
- Hydraulic Cable Cutter
- Manual Cable Cutters



VINI-TAPE

- Electrical PVC Insulation Tape



- Magnetic & Electronic Controls
- Ballast
- Ignitor
- Capacitor



- Cable Lugs
- Glands BW, CW, A1A2 & E1W
- Bi - Metallic Lugs
- Pin Type Lugs
- Ferrules
- Earth Rods & Accessories (Solid Copper & Bonded)
- Concrete Earth Pit

- Timer Switches



- PVC Conduits & Accessories
- Cable Management Systems
- PVC Adaptable Box
- GI Cable Tray
- GI PVC Coated Flexible
- PVC Glue



• Switch & Sockets



• GI Conduits
• Hot Dip Galvanised Conduits
• GI PVC Coated



• PVC Pipe & Accessories
• Solvent Cement Glue
• PVC Adaptable Boxes
• PVC Waterproof Boxes
• Electrical PVC Insulation Tape



• Floor Boxes - Under Floor & Flush Floor
• GI Boxes & GI Adaptable Boxes
• Bentonite Powder
• Metal Enclosures
• Din Rail, Neutral Bar, Earth Bar
• PVC, GI Cable Tie & GI PVC Coated Cable Ties
• Pin Type & U Type - Bus Bar, Spiral Wrapping- PG & Stuffing Glands





- PVC Switch Sockets & W/P Switch Sockets
- Metal Clad Switch Sockets & Accessories
- Chrome, Silver & Gold - Switch Sockets
- Pop-Up Floor Sockets



- GI Flexible Conduits
- GI PVC Coated Flexible Conduits
- Pulling Springs, Bending Springs & Bending Machine
- Brass Bush, Brass Lock Nut, Brass Reducer
- GI Doom Cover & GI Doom Hook
- W/P PVC Cover & Heat Shrink Sleeve
- Crimping Tools & Cable Cutter
- GI Slotted Channels & DIN Rail
- GI Cable Tray & GI Trunking
- Micc Clip



- PVC Multicore Cables
- PVC Communication Cables
- Data Cables (Cat6 & Cat5)
- Dish Wire
- Speaker Cable



- LED Flood Light
- LED COB Light, LED Mirror Light, LED Panel Light
- Prismatic Dust Proof Fitting, T5 Fitting, LED Tube
- LED Bulb, Candle Lamp, MR16 Lamp, LED Highway Fitting
- Emergency Light
- LED Strip Light, 60X60 Panel Light-LED Weatherproof Fittings



- Batten Fittings
- Weatherproof Fitting
- LED Weatherproof Fitting
- Prismatic & Louvre Fitting
- Mirror Light
- Metal Halide Fitting
- Halogen Fitting
- Hand Lamp



- Metal Halide & Halogen Lamp
- Red Alarm Bell & Door Bell
- Magnetic & Electronic Ballast
- Starter, Ignitor & Capacitor
- ELCB Box
- Motion Sensor & Smoke Detector
- Wire Clips, Trunking Sleeve, Binding Wrap, Fishing Tape
- PVC Isolator, Tester, Bulkhead Fitting, Hand Gloves & Tube Holder



JAZZ UP YOUR HOME WITH YOUNG ENERGY

Every enclosed area requires proper air circulation and ventilation.

We "ALFA FANS" strive to offer the best air movement in your home or office through our range of high-quality Ceiling Fans, Wall Mount Fans, Portable Fans, and Exhaust Fans.

Standard's fans are influenced by state-of-art technology, along with impressive designs and finishes. These fans save 80% on your electricity bill.

PVC ROUND EXHAUST FAN

PVC SQUARE AUTO SHUTTER EXHAUST FAN

METAL EXHAUST FAN

MIST FAN

PEDESTAL FAN

DUST CEILING FAN



- Alhama Weather Proof LED Light Fitting
- Weather Proof Fitting

ALHAMA LED T-8 NO FUSE

The most competitive solution for LED tubes of your choice



Benefits

- IP66 for a high protection against the income of dust and water.
- With prismatic design for an optimum light distribution and textured ends to hide the lampholders.
- Easy, tool-free access to the tray to facilitate installation and maintenance.
- High quality materials for a long-lasting product designed for a wide variety of industrial applications.

- Vortice Wall/Window Excel Fan



CODE 12612
VORTICE 150/6" AR
Wall/window axial fans

CODE 12452
VORTICE 230/9" AR
Wall/window axial fans

CODE 12620
VORTICE 15/6" A
Wall/window axial fans

CODE 12760
VORTICE 23/9" AR
Wall/window axial fans

- PVC Round Exhaust Fan
- Timer Switches



VENTILATING FANS

Window Type
Easy Installation
Powerful & Comfortable
Available- 6" & 9 Inch

Model	Input Voltage	Input Power (W)	Speed (RPM)	Blade Size (mm)	Hole Size (mm)	Air Delivery	Packing	Origin
SVF-6R	220-240/50Hz	14	1,900	150	Ø183	3.5M ³ /min	0.1M ³ /20pcs	Japan
SVF-8R	220-240/50Hz	23	1,850	200	Ø243	6.5M ³ /min	0.1M ³ /10pcs	Japan



Timer Switches

Max 30Amp
Metal Housing
Quartz Movement
15 Min. Time Set Up

MADE IN JAPAN

Model	ST-30A
Load capacity	30Amp (Resistive) 25Amp (Lighting) 3000W (Motor)
Rated voltage	220-240V~
Rated frequency	50/60Hz(Auto)
Programming cycle	24 hours
Min. time set up	15 minutes
Dimension	100x100x55mm
Carton packing	20 pcs/0.031M ³ /10.5kgs
Country of origin	Japan



- 110/220 Transformer



VA Available All Sizes

STEP UP-DOWN I-PHASE AUTO TRANSFORMERS

REVERSIBLE VOLTAGES: 110V - 220Vac

**They are designed to step up or down the network voltage in order to supply the needed voltage for equipment intended to be associated and for intermittent service.*

Cast Resin Technique of **GT**

Application

The range of cast resin accessories includes straight joints, branch joints, double branch joints und transition joints. In order to use the wide application range completely, the joints are delivered without connectors and clamps. But these can be delivered on request.

GT cast resin accessories are longitudinal as well as cross waterproof. All cast resin accessories are suitable for use on PVC-, PE-X (XLP), and PE-Insulated lines and cables. We deliver suitable accessories for paper-insulated cables as well.

The kits are usable- **OUTDOOR | INDOOR | IN THE EARTH | IN WATER | IN INSTALLATION DUCTS**



Advantages

- One Systems For All Volatage Ranges
- For Filling Or Producing Of Cable Accessories Or Parts Of Them For:
- Telecommunication And Signal Cables
- Power Cables Up To 1kV
- Power Cables Up To 10kV
- Gt Cast Resin Is Optimally Suitable For All Applications
- All Cast Resins Are Halogen-free
- Transparent Mixing Bags For Controlling The Mixing Procedure
- Transparent, Impact-resistant, Self-sealing Mold Forms



Delivery

The straight and transition joints are equipped with distance holders. Up to size GT 3 with funnel. The series GTZ is a cylindrical form and especially suitable for single-core, signal and telecommunication cables.

Cast Resin Type GA

The cast resin type GA is a 2-component-polyurethane-cast resin system and meets the standard DIN VDE 0291 part 2. It is rated for nominal voltage up to 10KV.

The cast resin is delivered in a transparent mixing bag. After removing the protective bag and the separator, the 2 Components flow together and must be mixed for about 3 minutes. When the color becomes homogeneous, the resin is ready for use.

Features

- High Hydrolysis Strength
- Co, Gas Producing <10ml (Hydrophobia)
- Thin-fluid After Mixing
- No Deposites Of Filling Material
- Excellent Adhesive Strength On Metal And Synthetic Material
- Soft And Elastic After Hardening
- Long Storage Time





Metal Exhaust Fan



PVC Round Exhaust Fan



PVC Square Auto Shutter Fan



Blower Fan with Hose



60x60 Inch

Ceiling Fan + LED



Wall Fan



Mist Fan



Stand Fan



Wall Fan



Motion Sensor



Smoke Detector



Metal Enclosure



GI Box



GI Box & GI Ring



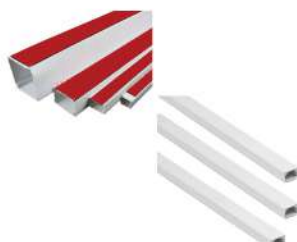
Aluminium W/P Box



PVC Box



WaterProof Box



PVC Trunking



PVC Doom



PVC Conduit



PVC Cable Tie



PVC Coated Tie



SS Cable Tie



Cable Tie Base



Fishing Tape



Wire Clip



Metal Pulling Spring



Ind. Plug S/Socket



Bending Machine



Die Set



Crimping Tool



Cable Cutter



PVC Isolator



Pipe Accessories



Insect Killer



Float Switch



PG Glands



Tube Holders



PVC Carrier Strip



Cable Marker



**Rail Mounting
Connector**



E27 Holder



Ceiling Rose



Pendent Holder



**Tray
Earthing Connector**



Insulation Tape



PVC Insulated Lugs



Heat Shrink Sleeve



Trunking Sleeve



Caution Tape



Plug Top



Porcelain Holder



Extension Drum



Extension Board



W/P Connector



Alarm Bell



S2 & S10 Starter



Telephone Box



DB Box



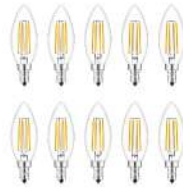
Din Rail



LED Tube Fitting



Strip Light



LED Candle Light



LED Bulb



COB Light



**60x60
LED Panel**



Spot Light



Highway Fitting



Flood Light



Strip Light Roll



Panel Surface Light



Round Panel Light



Square Panel Light



Batten Fitting



LED Tube Light



MR16 Gu5.3 Lamp



Bending Spring



MICC Fire Clip



Magnetic Ballast



Energy Saver Lamp



Cat 6 Wire



Insect Killer Tube



Bentonite Powder



Coaxial Cable



PVC Glue



Galvanised Steel



GI Steel Conduit



Cable Drum



Photo Cell



Cable Roller



Packing & Masking Tape



Bulkhead Fitting



Chrome Switch Socket



Electronic Ballast



GI Channel



Hand Lamp



Spiral Sleeve



PVC Pulling Spring



Channel End Cap



Floor Box



Fisher Plug



Cotton Sleeve



Capacitor



M/H Ballast



Iginator



Busbar Insulator



Busbar



**GI Conduit
Accessories**



PVC Adaptable Box



Switch Box



Nickel Adaptor



Ceiling Fan



**15 Meter Roll
GI PVC Coated**



Tube Clip



Emergency Light



Metal Clad S/Socket



Pop up Floor Socket



Pop up Floor Socket



Pop up Floor Socket



Shaver Socket



Switch Socket



W/P Switch Socket



**2 Gang
Switch Socket**



**3 Gang 1 Way
Plate Switch**



**1 Gang 1 Way
Plate Switch**



**1 Gang
Switch Socket**



**13A 1Gang
Switch Socket**



**13A 1Gang DP+2USB
Switch Socket**



**10A 3Gang 1Way
Switch Socket**



**1Gang Light
Wooden Cover**



**2Gang Light
Wooden Cover**



**13A 2Gang DP+2USB
Switch Socket**



**1Gang
Grey Cover**



**2Gang
Grey Cover**



**10A 1Gang 1Way
Switch Socket**



**13A 2Gang
Switch Socket**



**10A 3Gang 1Way
Switch Socket**



**13A 2Gang Single Pole
Switch Socket**



**45A 1Gang Switch
DP + Neon**



Gold Switch Socket



1Gang Blank Plate



2Gang Blank Plate



**40mm 1Gang
Cavity Box**



**40mm 2Gang
Cavity Box**



**E27 Batten
Lamp Holder**



**Plug In Type
Ceiling Rose**



Blank Plate



**T2 E27
Lamp Holder**



**2Gang
Switch Socket**



**2Gang 1Way
Plate Switch**



**2Gang 1Way
Plate Switch**



**1Gang 1Way
Plate Switch**



**2Gang
Switch Socket**



**2Gang
Switch Socket**



Rotary Switch



Cut Out



**Trunking Sleeves
Edge Guard**



**2Gang
Switch Socket**



**2Gang 1Way
Plate Switch**



**Universal Socket
USB + C Port**



W/P Switch Socket



16A+13A Double



**2USB + Neon
13A+1Gang Multi**



**2USB + Neon
13A+2Gang Multi**



**2Gang 2Way
Switch IP66**



**1Gang IP66
Bell Switch**



W/P Box Knockout



PVC Isolator



24" Stand Fan



Ind. Wall Fan



MCCB



Duct Fan



PVC W/P Box



Dust Proof Fitting



LED W/P Fitting



LED Tube Light



Smoke Detector



REXANS PRODUCTS



PVC Flexible Wire



Rubber Cable



Flood Light



**Prismatic
LED Panel**



LED Mirror Light



E-14 LED Candle



MR16 Gu5.3 Lamp



Highway Fitting



LED Batten Fitting



LED T5 Fitting



PVC Junction Box



Wire Clip

AR-AR

AR-AR PRODUCTS

AR-AR



Flexible Wire



**LED Tube
Fitting Combo**



W/P Fitting



LED Flood Light



Flexible Cable



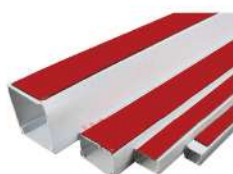
GI Flexible



Smoke Detector



W/P Fitting



PVC Trunking

BEST QUALITY PRODUCTS

"Exquisite and superior materials combine to create the best quality products you've been searching for."

MISCELLANEOUS PRODUCTS



DUPR@ Tester



Earth Rod



BI Metallic Lugs

HEX & BRACO



Cable Lugs



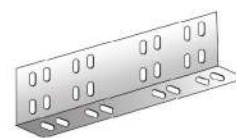
Cable Tray



Hanging Clamp

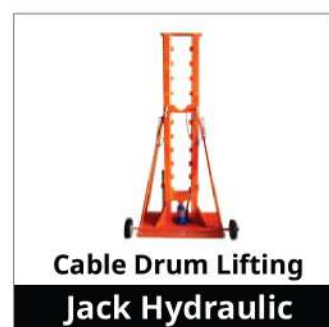
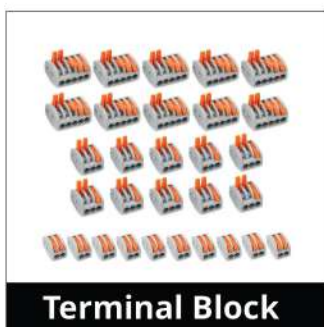


Copper Tape



Cable Tray Coupler

MISCELLANEOUS PRODUCTS



**More than 4000+
Electrical Products
Under One Roof.**

Introducing our **ALFA** electrical warehouse, where you can find over **4000+** electrical products all conveniently located under one **Roof!** From wiring and lighting fixtures to switches and tools, we have everything you need for your electrical projects.

Visit us today and let our knowledgeable staff assist you in finding the perfect solution for all your electrical needs.

*Thank
you*

www.alfaelec.ae

www.alfaelec.ae

ELECTRICAL & ACCESSORIES



ALFA ELECTRICAL MATERIALS CO L.L.C.

Head Office Tel. 04-2270741

Deira (Br.) Tel. 04-2270860

Sharjah (Br.) Tel. 06-5210976
Sharjah (Br.) Tel. 06-5345030

Alquoz (Br.) Tel. 04-3470155
Alquoz (Br.) Fax: 04-3470865

Website: www.alfaelec.ae | E-mail: relite@alfaelec.ae